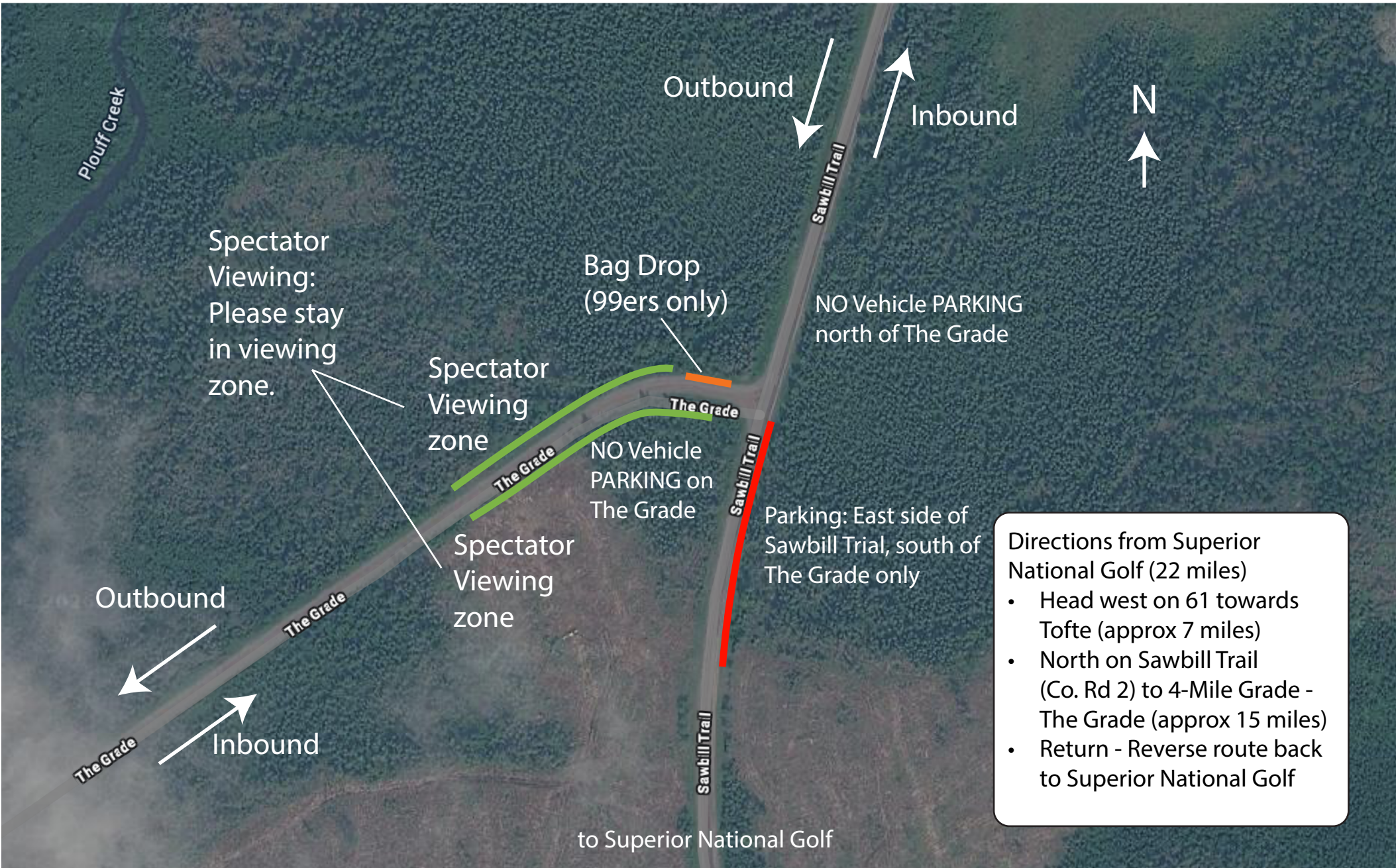


2026 Lutsen Spectator Map



Plouff Creek

Outbound

Inbound



Spectator Viewing:
Please stay in viewing zone.

Bag Drop (99ers only)

NO Vehicle PARKING north of The Grade

Spectator Viewing zone

NO Vehicle PARKING on The Grade

Spectator Viewing zone

Parking: East side of Sawbill Trail, south of The Grade only

Outbound

Inbound

Directions from Superior National Golf (22 miles)

- Head west on 61 towards Tofte (approx 7 miles)
- North on Sawbill Trail (Co. Rd 2) to 4-Mile Grade - The Grade (approx 15 miles)
- Return - Reverse route back to Superior National Golf

to Superior National Golf